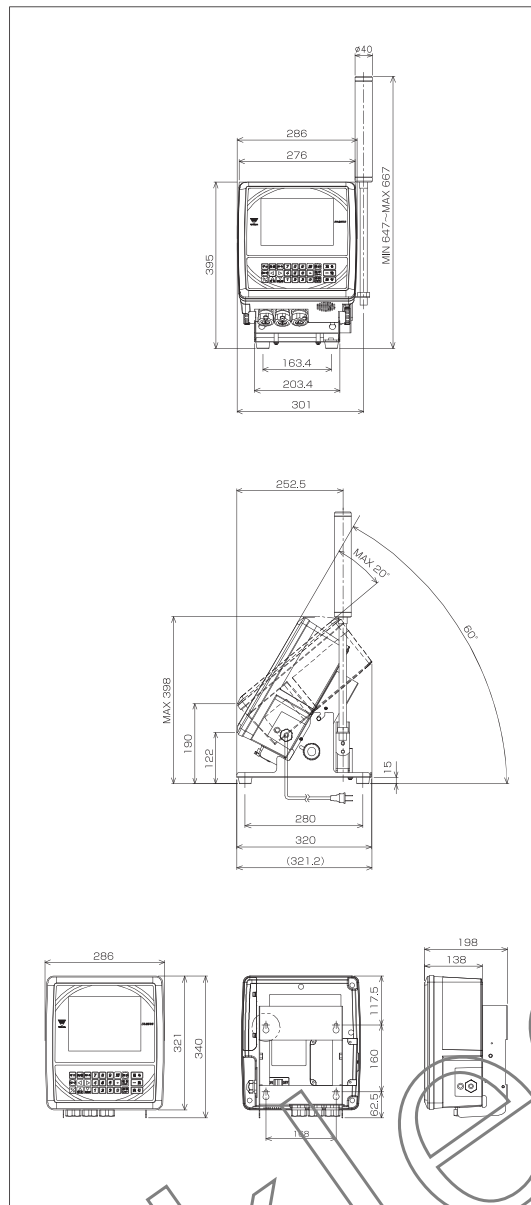


Basic Specifications

Display	8.4 inch color LCD touch panel VGA480dot(H) x 640dot(W)
Memory for registration	Ingredient 10000, recipe2000 50
Internal accuracy	1/600000
Display accuracy	1/20000(Maximum)
Interface	Open connector OUT 5 IN 5
Weight	5.5kg(DI-2000), 7.7kg(with stand)
Power	AC 100 V
Power consumption	35W
Usage Temp	0~40
Built-in Battery	Replacement is in 2 years due to consumable itemScale for connection

Scale option	Model	Capacity	Accuracy		Platter size	Unit of weight	
			Possible display	Recommended display			
Force balance	S-UX620H	620 g	0.001 g	0.01 g	108 x 105		
	S-UX6200H	6,200 g	0.01 g	0.1 g	170 x 180		
Desktop scale	S-XA G500	500 g	0.05 g*	0.1 g*	0.2 g*	204 x 146	
	S-XA K1	1,000 g	0.05 g*	0.1 g*	0.2 g*	0.5 g*	247 x 180
	S-XA K2.5	2,500 g	0.2 g*	0.5 g*	1 g	398 x 278	
	S-XA K5	5,000 g	0.5 g*	1 g	2 g	398 x 278	
	S-WP K6	6,000 g	0.5 g*	1 g	2 g	336 x 246	
	S-XA K10	10 Kg	0.5 g*	1 g	2 g	398 x 278	
	S-WP K15	15 Kg	1 g	2 g	5 g	336 x 246	
	S-XA K25	25 Kg	2 g	5 g	10 g	398 x 278	
Platform scale	S-SK (S) 30	30 Kg	2 g	5 g	10 g	318 x 420	
	S-SK (S) 60					318 x 420	
	S-TK (S) 60	60 Kg	5 g	10 g	20 g	415 x 520	
	S-UK (S) 60					598 x 700	
	S-SK (S) 150					318 x 420	
	S-TK (S) 150	150 Kg	10 g	20 g	50 g	415 x 520	
	S-UK (S) 150					598 x 700	
	S-TK (S) 300	300 Kg	20 g	50 g	100 g	415 x 520	
S-UK (S) 300					598 x 700		
Bar scale	S-VK600	600 Kg	50 g	100 g	200 g	598 x 700	
	S-LK600	600 Kg	50 g	100 g	200 g	800(a) x 100(b) x 95(c)	
	S-LK1500	1,500 Kg	100 g	200 g	500 g	1150(a) x 100(b) x 95(c)	
	S-LK3000	3,000 Kg	200 g	500 g	1,000 g	1150(a) x 130(b) x 170(c)	

Overall Dimension (mm)



Weight Blender

Traceability adopted

Manual weighing/mixing system without human error

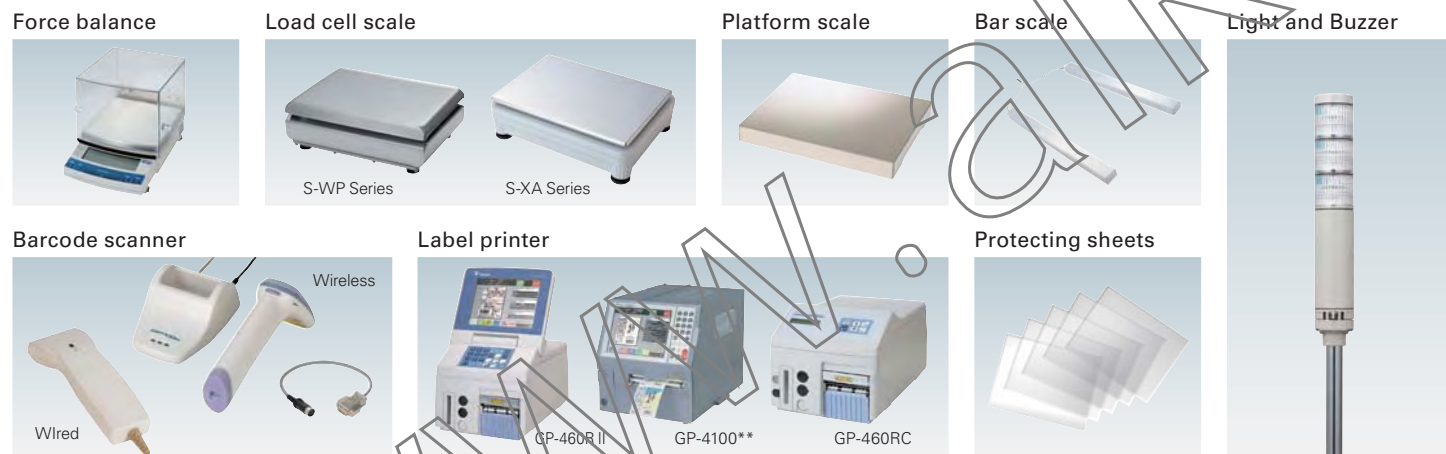
DI-2000 Dust proof/ wash down indicator

IP-65 wash down

PC scale for a various industry
User friendly dialogic operation
(Color touch panel)



Options



TERAOKA SEIKO CO., LTD.

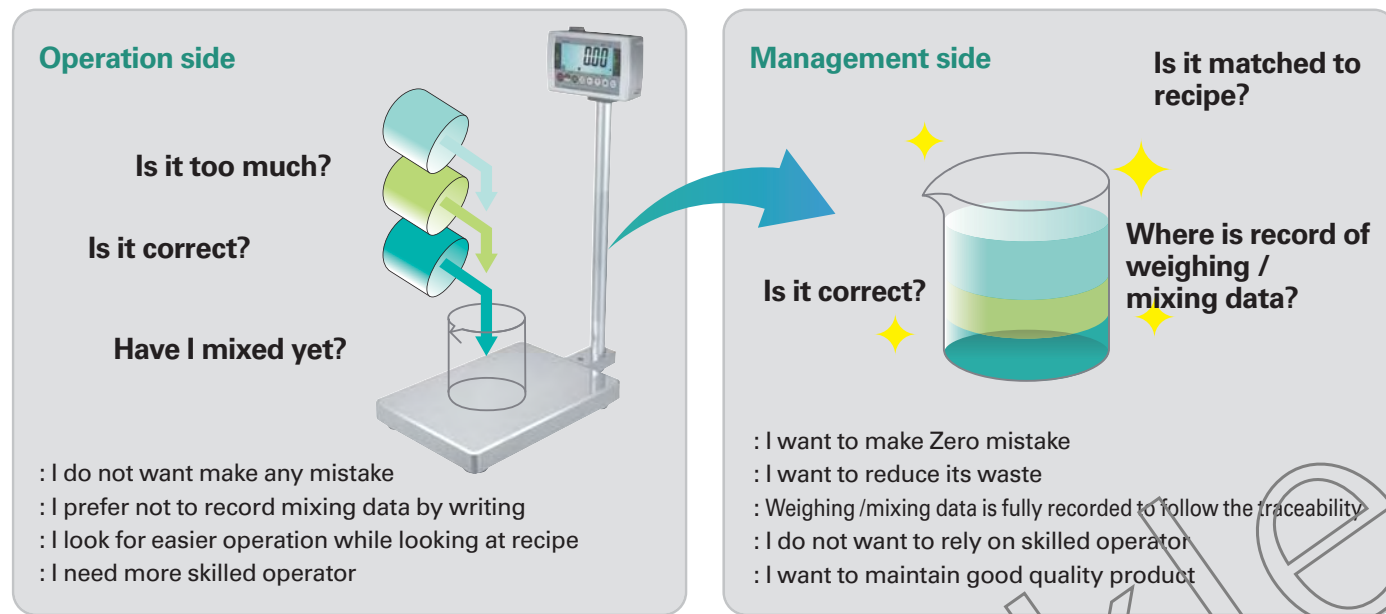
13-12 Kugahara 5-chome, Ohta-ku,
Tokyo 146-8580, JAPAN
TEL: +81-3-3752-2131
FAX: +81-3-3752-2801
URL: www.digisystem.com
E-MAIL: info@hq.digi.co.jp

*Searching for
a New Balance*

Weight Blender will realize non error operation on manual weighing / mixing transaction, and contribute towards quality improvement, easy follow of traceability and total cost reduction.

Mixing Ingredient is inevitable transaction at a various operation site, which is normally proceeded manually with recipe paper, to often produce error on the process, as a result, final product is completed with error. Therefore Weight Blender is required to prevent from mixing error in advance.

Do you have any concern or worry ?



Total solution through Weight Blender

Weight Blender realizes weighing and mixing operation with no error. Also its basic design enables "easiness", "certainty", "non error operation", and no further step is taken with wrong procedure.

Quality stabilization

Weight accuracy

Traceability

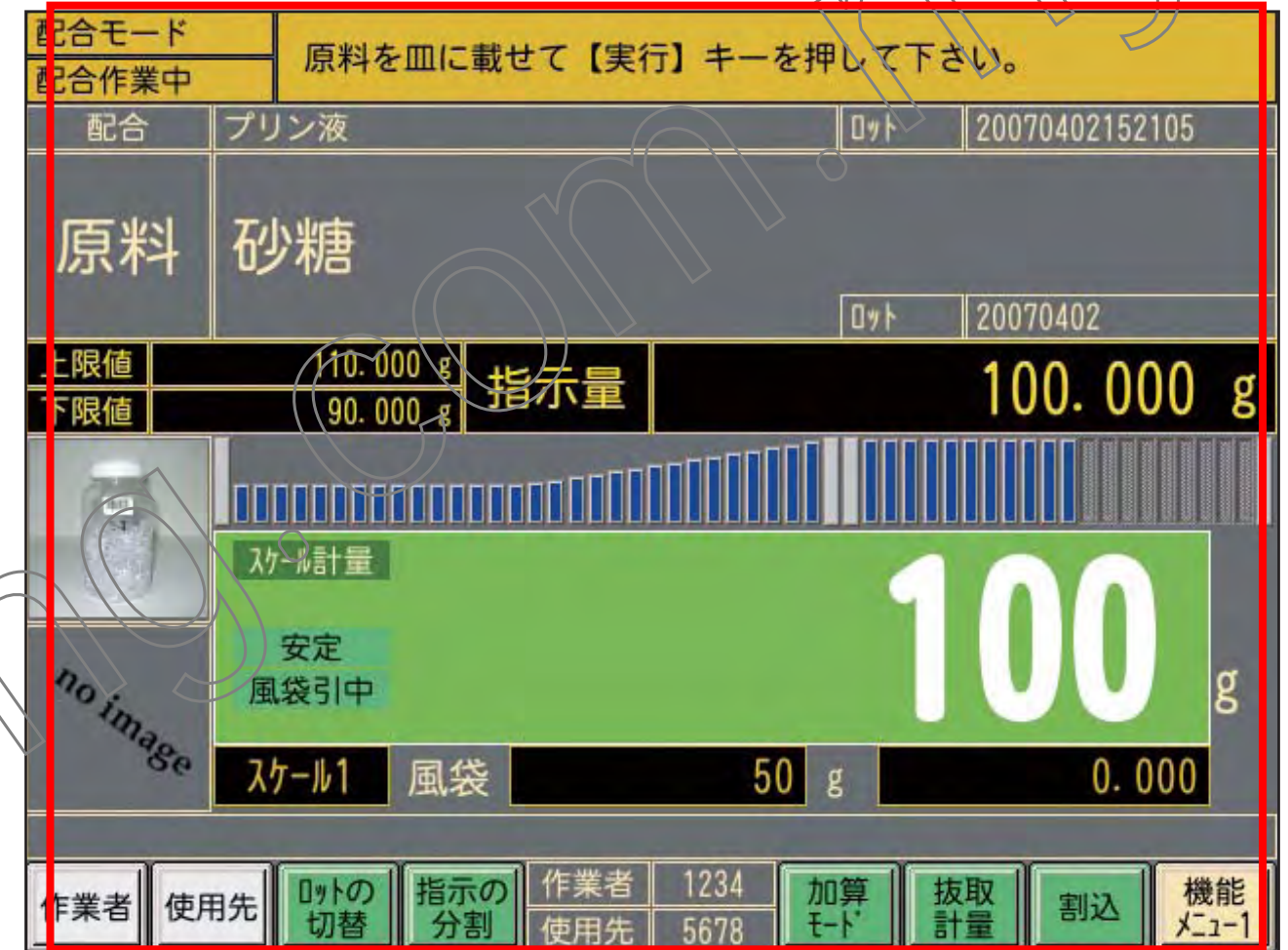
- Realization of accurate weighing / mixing
- Traceability
- Contribution on total production cost
- Standardization of operation at site



Color touch panel will create easy & friendly operation.

Big & clear color touch panel is adopted.

Dammy damy damyDammy damy damyDammy damy damyDammy damy damy



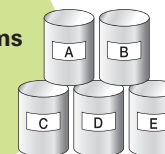
Actual size : W170 x H128 mm

Big master file is maintained.

Dammy damy damyDammy damy damyDammy damy damyDammy damy damy

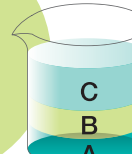
Ingredient

10,000 items can be registered.



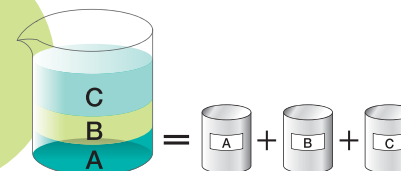
Recipe

2,000 cases can be registered.



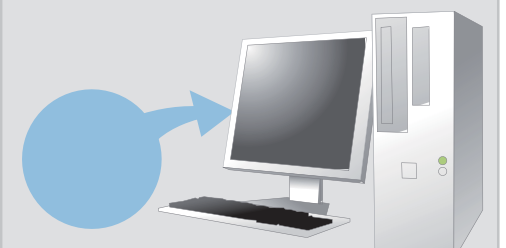
of ingredient per recipe

50 items can be registered



PC software is available

CSV file on your PC with Ingredient master, recipe master data can be registered at once to our Weight Blender.



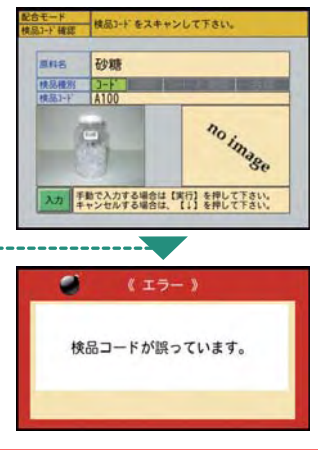
Non error operation.

You can rely on Weight Blender for Automatic calculation of ingredient ratio, checking if ingredient is right, checking if weight is correct

Prevention of wrong ingredient usage

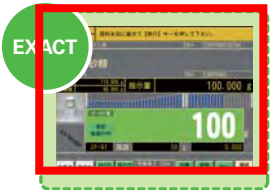
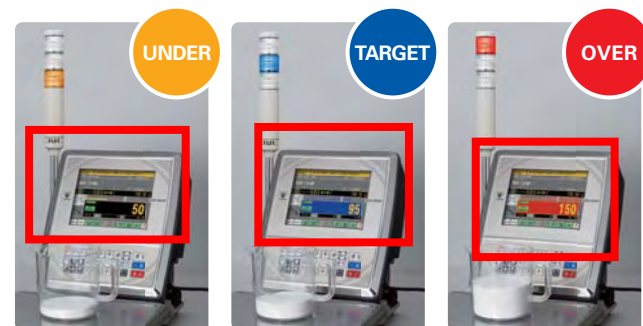
In case of wrong ingredient, operation can not be continued. Photo of ingredient can be shown.

In case of wrong ingredients



Prevention of weight error

Under, over, target level can be reviewed.

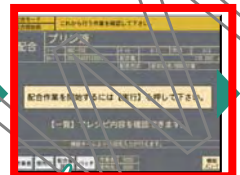


Ingredient ratio calculation

Weight of Ingredient change can be automatically calculated based on recipe.

Mixing A,B,C

原料A 500g
原料B 300g
原料C 200g
合計 1000g



原料A 1000g
原料B 600g
原料C 400g
合計 2000g

If above quantities are on the master Enter that total weight is 2000g Indicated quantity is automatically calculated

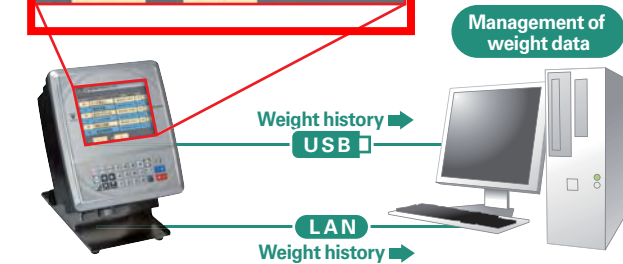
Customer at site requested functions are equipped as a standard feature.

Traceability

Weighing data is automatically registered internally, confirm its data of history on display and also transfer easily to PC through USB or LAN.

* CSV data is coming up once USB memory stick is inserted.

配合番号	配合名	実行日時	作業数	作業量
[11]	メーク落とし	2007/04/02 16:09:01	1件	作業量
[12]	洗顔用石鹸	2007/04/02 16:09:23	2件	作業量
[13]	毛穴ケアジェル	2007/04/02 16:10:02	3件	作業量
[14]	スペシャルケア用品	2007/04/02 16:10:22	3件	作業量
[15]	美白入浴剤	2007/04/02 16:10:41	3件	作業量
[16]	美白用美溶液	2007/04/02 16:10:58	2件	作業量

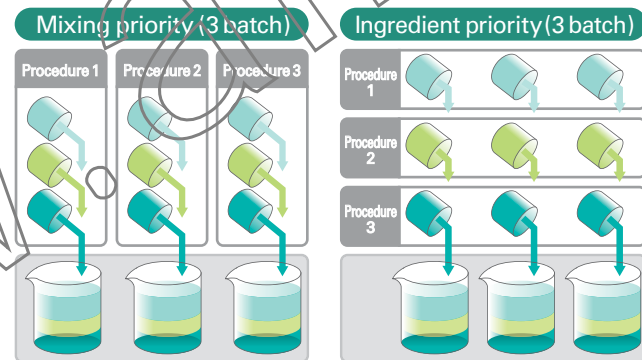


In case of displaying weight history on Excel

配合コード	配合名	原料コード	原料名	計量値	原料ロット	配合ロット	指示量	上段	下段
ABC-200	プリン液	A103	牛乳	12	20070001	20070404210021	50	55	4
ABC-200	プリン液	A100	砂糖	10	20288983	20070404210021	10	11	9
ABC-200	プリン液	B300	卵黄	0	54321452	20070404210021	0	0	0
ABC-100	糖肉のタレ	A100	砂糖	48	43245223	20070410145406	50	50	43
ABC-100	糖肉のタレ	A101	糊粉	10	27545674	20070410145406	10	11	1
ABC-100	糖肉のタレ	A102	醤油	0	6453764	20070410145406	0	0	0
ABC-100	糖肉のタレ	A100	砂糖	50	64636543	20070410145523	50	50	45
ABC-100	糖肉のタレ	A101	糊粉	0	53645634	20070410145523	0	0	0
ABC-100	糖肉のタレ	A100	砂糖	50	65473787	20070410150332	50	55	4

Accommodate a various mixing method

Mixing methods are given priority to both mixing and ingredient.



Lot No

Once Lot No of ingredient in usage is input while it is weighed, which is applied to the detailed history. Lot No can be input through bar code scanning.

Prevention of wrong ingredient usage

Weight Blender has feature to prevent from using expired ingredient through bar code scanning.



Prevention of Tare forgotten

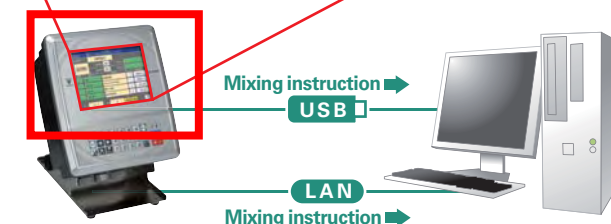
babababababababaaadamyyyyyyyyyyy



Mixing instruction is sent

CSV file through PC is sent its mixing instruction to Weigh Blender.

原料	配合名	計量	配合量 (g)
ABC	洗顔用石鹸	2	*指定なし*
ABC-200	スペシャルケア用品	1	*指定なし*
ABC-300	美白入浴剤	3	2000.000
ABC-400	美白用美溶液	2	1000.000



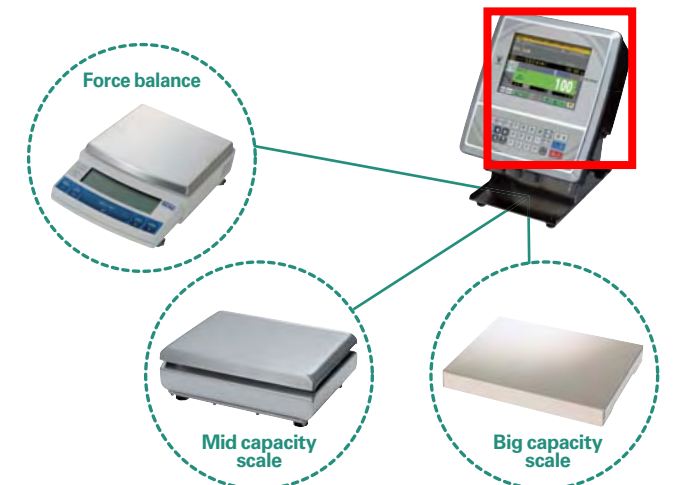
Ingredient label is available

With connection with GP label printer can issue Ingredient label and Product contents label.



3 scales can be connected

babababababababaaadamyyyyyyyyyyy



To interface with upper server system

babababababababaaadamyyyyyyyyyyy



Sturdy body to live up to severe environment

Strong body in view of operation with water, powder oily item

babababababababaaadamyxxxxxxxxxxxx

Waterproof



Display is IP65 wash down level

Dust-proof



Convenient to use in wet scene

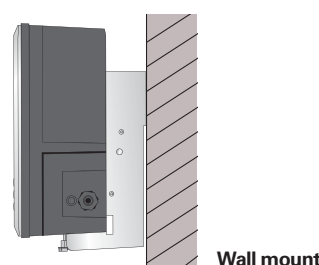
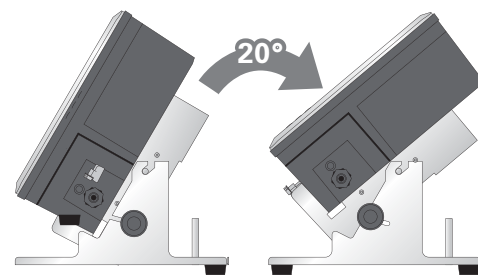
User friendly key layout

In addition to Color touch panel, often used mechanical key is equipped



Adjustable display angle

Display can be adjusted by 20 degree. User friendly key layout.



Wall mount

Built-in battery

Built in battery for power failure, unexpected accident

Life of battery is approx every **2 years** to be replaced

Weight Blender can be combined freely among scanner, scale, and label printer.

Free & flexible combination

A various option is available, depending on your requirements.

Load cell 1
Load cell 2

LAN (Ethernet)

Interface

USB

Force balance

Label printer

GP-460R II

GP-4100**

GP-460RC

Load cell scale

Light and Buzzer

Barcode scanner

Wireless

Wired

Desktop scale

Platform scale

Bar scale